

RPS23 Antibody (monoclonal) (M02)**Mouse monoclonal antibody raised against a partial recombinant RPS23.****Catalog # AT3715a****Specification**

RPS23 Antibody (monoclonal) (M02) - Product Information

Application	WB, IF
Primary Accession	P62266
Other Accession	NM_001025
Reactivity	Human, Mouse, Rat
Host	mouse
Clonality	Monoclonal
Isotype	IgG2a Kappa
Calculated MW	15808

RPS23 Antibody (monoclonal) (M02) - Additional Information**Gene ID** 6228**Other Names**

40S ribosomal protein S23, RPS23

Target/Specificity

RPS23 (NP_001016, 44 a.a. ~ 143 a.a) partial recombinant protein with GST tag. MW of the GST tag alone is 26 KDa.

Dilution

WB~~1:500~1000

IF~~1:50~200

Format

Clear, colorless solution in phosphate buffered saline, pH 7.2 .

Storage

Store at -20°C or lower. Aliquot to avoid repeated freezing and thawing.

Precautions

RPS23 Antibody (monoclonal) (M02) is for research use only and not for use in diagnostic or therapeutic procedures.

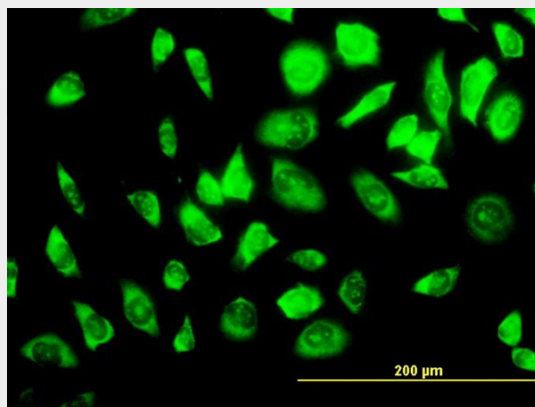
RPS23 Antibody (monoclonal) (M02) - Protocols

Provided below are standard protocols that you may find useful for product applications.

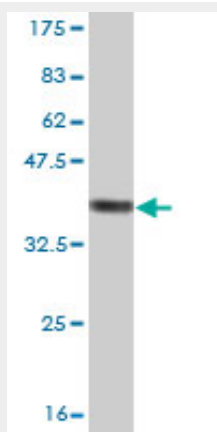
- [Western Blot](#)
- [Blocking Peptides](#)
- [Dot Blot](#)

- [Immunohistochemistry](#)
- [Immunofluorescence](#)
- [Immunoprecipitation](#)
- [Flow Cytometry](#)
- [Cell Culture](#)

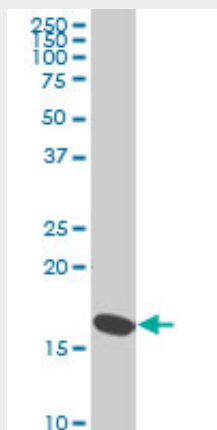
RPS23 Antibody (monoclonal) (M02) - Images



Immunofluorescence of monoclonal antibody to RPS23 on HeLa cell. [antibody concentration 10 ug/ml]

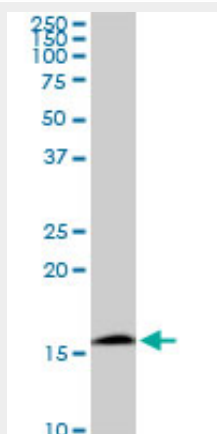


Antibody Reactive Against Recombinant Protein. Western Blot detection against Immunogen (36.74 KDa) .

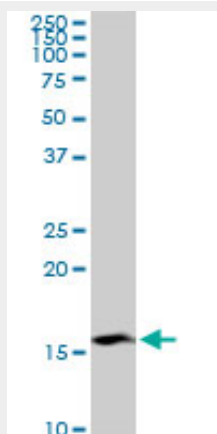


RPS23 monoclonal antibody (M02), clone 1E3 Western Blot analysis of RPS23 expression in HeLa (

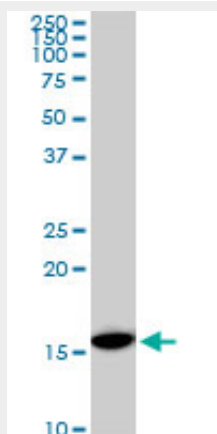
(Cat # AT3715a)



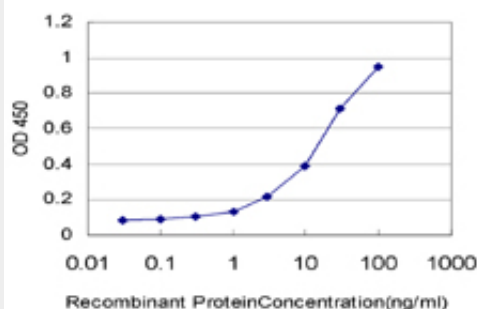
RPS23 monoclonal antibody (M02), clone 1E3. Western Blot analysis of RPS23 expression in PC-12((Cat # AT3715a)



RPS23 monoclonal antibody (M02), clone 1E3. Western Blot analysis of RPS23 expression in Raw 264.7((Cat # AT3715a)



RPS23 monoclonal antibody (M02), clone 1E3. Western Blot analysis of RPS23 expression in NIH/3T3((Cat # AT3715a)



Detection limit for recombinant GST tagged RPS23 is approximately 0.3ng/ml as a capture antibody.

RPS23 Antibody (monoclonal) (M02) - Background

Ribosomes, the organelles that catalyze protein synthesis, consist of a small 40S subunit and a large 60S subunit. Together these subunits are composed of 4 RNA species and approximately 80 structurally distinct proteins. This gene encodes a ribosomal protein that is a component of the 40S subunit. The protein belongs to the S12P family of ribosomal proteins. It is located in the cytoplasm. The protein shares significant amino acid similarity with *S. cerevisiae* ribosomal protein S28. As is typical for genes encoding ribosomal proteins, there are multiple processed pseudogenes of this gene dispersed through the genome.

RPS23 Antibody (monoclonal) (M02) - References

Mass spectrometric analysis of the human 40S ribosomal subunit: native and HCV IRES-bound complexes. Yu Y, et al. *Protein Sci*, 2005 Jun. PMID 15883184. Nucleolar proteome dynamics. Andersen JS, et al. *Nature*, 2005 Jan 6. PMID 15635413. The status, quality, and expansion of the NIH full-length cDNA project: the Mammalian Gene Collection (MGC). Gerhard DS, et al. *Genome Res*, 2004 Oct. PMID 15489334. The molecular mechanics of eukaryotic translation. Kapp LD, et al. *Annu Rev Biochem*, 2004. PMID 15189156. Complete sequencing and characterization of 21,243 full-length human cDNAs. Ota T, et al. *Nat Genet*, 2004 Jan. PMID 14702039.